

TULMan™

**Tool Usage and Life Management
of Small Pneumatic Tools**

Cleco®

Innovation In
Assembly Productivity



**Uranusz**

Szerszám Kereskedőház Kft.

1103 Budapest, Noszlopy u. 16/b.

info@uranusz.hu

www.uranusz.hu

T: +36 1 260 30 30 Fax: +36 1 260 60 83



An Industry First: Cleco TULMan™ Air Tool Management

The Cleco TULMan, an electronic tripometer and odometer for small pneumatic power tools, allows tool performance checks and preventative maintenance to be implemented based on tool usage. Easy to install, this universal product can be used anywhere air is flowing between 5 cfm/145 lpm and 20 cfm/570 lpm.

Features & Benefits of the TULMan include:

- First ever odometer and tripometer for small pneumatic tools
- Can be used with all Cleco and Dotco small pneumatic tools without affecting tool performance*
- Usable on any small pneumatic device with suitable air flow*
- Manages tool service, manage tool calibration, quantify and compare tool and consumable life, monitor workforce productivity, improve quality of product or process and realize cost savings



Cycle monitoring for calibration and service



Run time monitoring for performance checking and service



Run time monitoring for consumable use or process efficiency

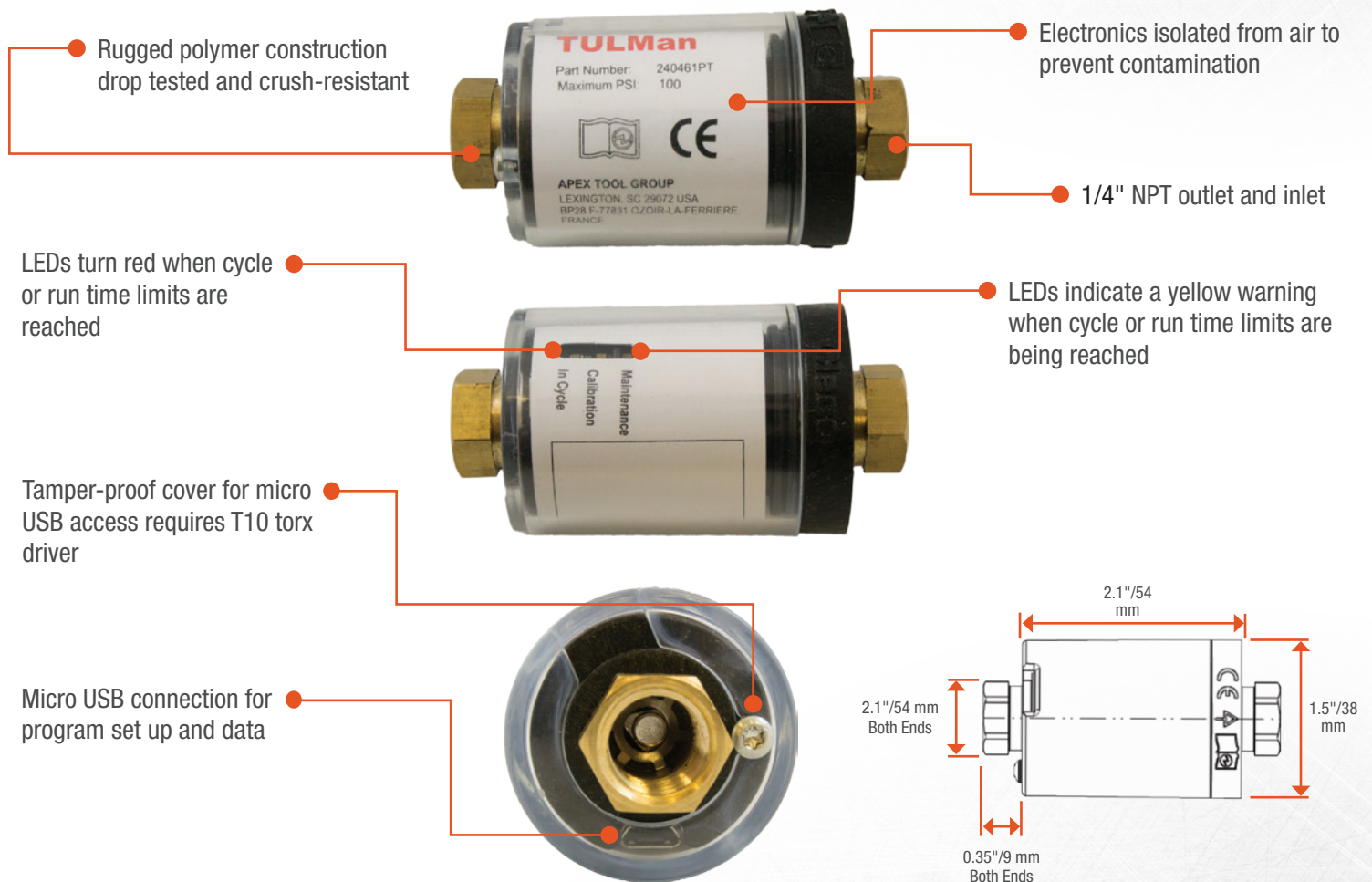
*based on airflow - refer to specification table



Features & Benefits

TULMan Electronic Counter

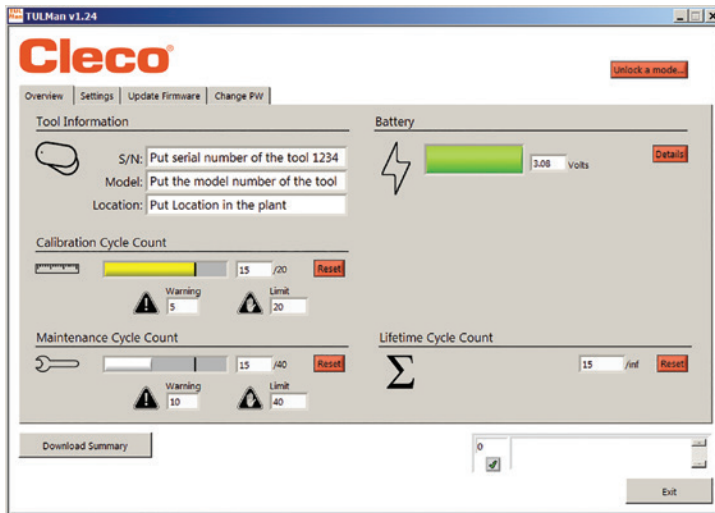
Simple and easy to install on any small pneumatic tool, the Cleco TULMan allows you to know **when and how often** your tools are used for calibration, service and overall life. This device can also be used to **monitor** consumables and productivity.



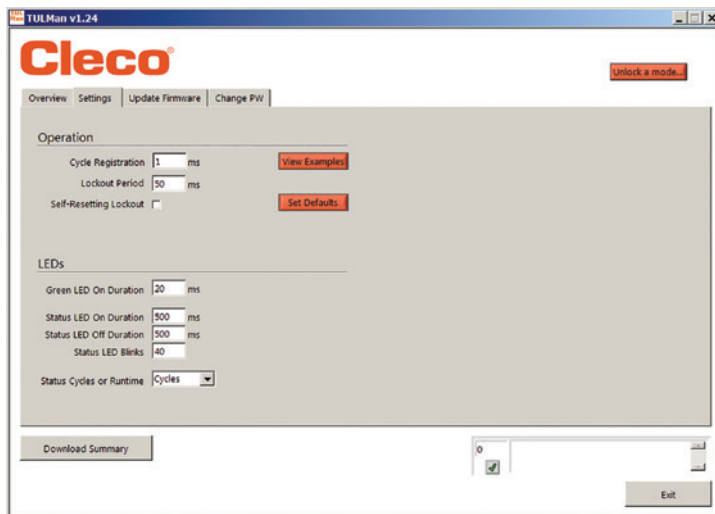
Specification Table

Part Number	Max Pressure	Min Flow	Max Flow	Weight	Connection
240461PT	100 psi/6.9 bar	5 cfm/145 lpm	20 cfm/570 lpm	2.8 oz/80 g	1/4" NPT

Easy-To-Use Software



- Password access to reset and program
- Battery life monitoring
- Set tool model, serial number and location parameters for more specific monitoring
- Set warning level before reaching limit
- Reset life count to move counter to a new tool
- Reset counts after calibration or service



- Configure minimum time before a cycle is counted and between cycles for more accurate cycle count
- Configure LEDs to maximize battery life
- Choose cycle or run time monitoring
- Downloadable csv file to monitor tool usage over time

For more information go to www.ClecoTools.com/TULMan

North America | South America

Apex Tool Group
670 Industrial Drive
Lexington, SC 29072
Phone: +1 (803) 951 7510
Fax: +1 (803) 996 2400
www.apexpowertools.com
Apex@apextoolgroup.com

Apex Tool Group
Manufacturing México
S. de R.L. de C.V.
Vialidad El Pueblito #103
Parque Industrial Querétaro
Querétaro, QRO 76220
Mexico
Tel: +52 (442) 211 3800
Fax: +52 (800) 685 5560

Apex Tool Group
Ind. Com. Ferram. Ltda.
Av. Liberdade, 4055
Zona Industrial Iporanga
Sorocaba, São Paulo
CEP# 18087-170
Brazil
Tel: +55 15 3238 3820
Fax: +55 15 3238 3938

Europe | Middle East | Africa

Apex Tool Group
GmbH & Co. OHG
Industriestraße 1
73463 Westhausen
Germany
Phone: +49 (0) 73 63 81 0
Fax: +49 (0) 73 63 81 222

Apex Tool Group S.A.S.
25 rue Maurice Chevalier
B.P. 28
77831 Ozoir-la-Ferrière
Cedex, France
Tel: +33 1 64 43 22 00
Fax: +33 1 64 43 17 17

Apex Tool Group
Hungária Kft.
Platánfa u.2
9027 Győr
Hungary
Tel: +36 96 66 1383
Fax: +36 96 66 1135

Asia Pacific

Apex Power Tool Trading
(Shanghai) Co., Ltd.
2nd Floor, Area C
177 Bi Bo Road
Pu Dong, New Area,
Shanghai
China 201203, P.R.C.
Phone: +86 21 60880320
Fax: +86 21 60880298

Apex Power Tools India
Private Limited
Gala No. 1, Plot No. 5
S. No. 234, 235 & 245
Indialand Global Industrial Park
Taluka-Mulsi, Phase I
Hinjawadi, Pune 411057
Maharashtra, India
Phone: +91 020 66761111