

Production Guide of Metal Wheel

No 1–08. For Glass

No 9–14. For Tooling

No15–17. For Automobile Parts

No18–21. For Materials

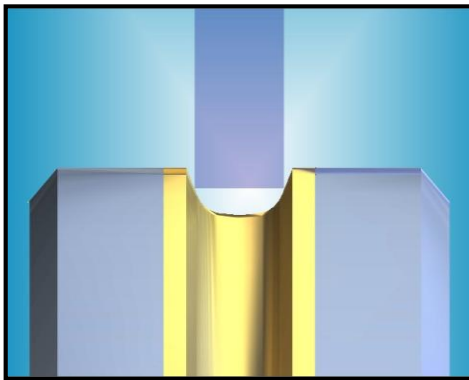
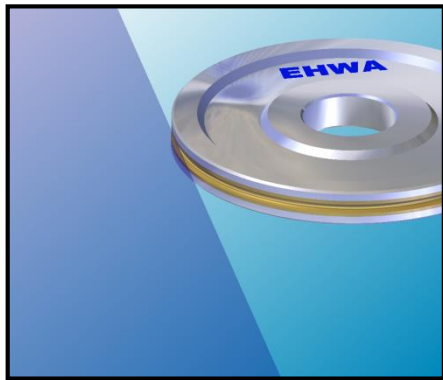
No22–24. For Specials

No25–27. Brazing Single Layer

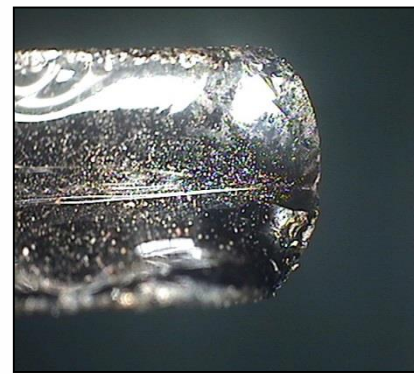
1. Pencil Edge Wheel (For Automobile)

APPLICATION

Used for grinding and shape forming of the edges of all sorts of glass for automobile and flat glass, etc.



SHAPE OF WHEEL



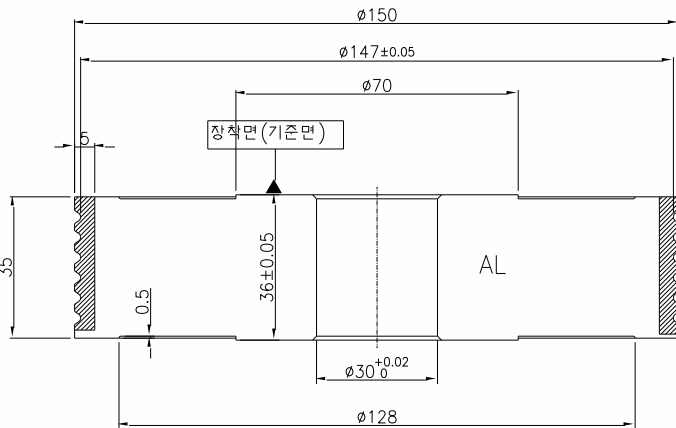
WORKPIECE(GLASS)

TYPE	APPLICATION	DIAMETER	GRIT SIZE	BOND
MD-1FF6Y	PENCIL EDGING	$\phi 100 \sim \phi 250$	#170~#230	MG16, MG21N
MD-1FF6Y	SEAMING	$\phi 100 \sim \phi 250$	#140~#200	MG21N, MG72

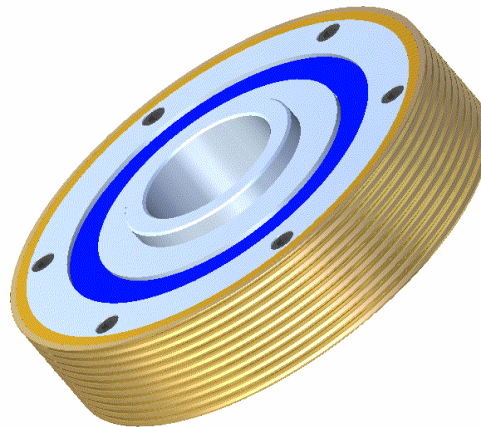
2. Pencil Edge Wheel (For Exterior Mirror)

APPLICATION

Used for grinding and shape forming of the edges of automobile exterior and interior mirror.



SHAPE OF WHEEL



Exterior Mirrors



WORKPIECE (GLASS)

TYPE	APPLICATION	DIAMETER	GRIT SIZE	BOND
MD-1FF6Y	PENCIL EDGING	$\phi 100 \sim \phi 200$	#200 ~ #325	MB21C, MC6

3. Pencil Edge Wheel (For Decorative)

APPLICATION

Used for pencil edging and seaming architecture, decorative glass have contributed greatly to industrial safety.



SHAPE OF WHEEL



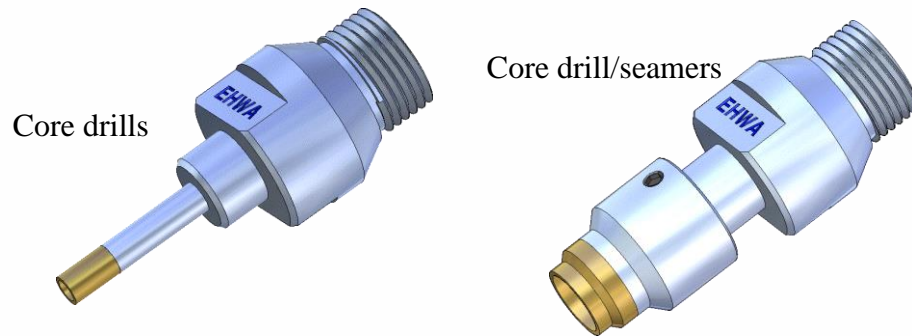
WORKPIECE(GLASS)

TYPE	APPLICATION	DIAMETER	GRIT SIZE	BOND
MD-1FF6Y	EDGE GRINDING	$\phi 50 \sim \phi 200$	#230~#600	MB21, MC
MD-DW	EDGE GRINDING	$\phi 15 \sim \phi 20$	#230~#600	MB21

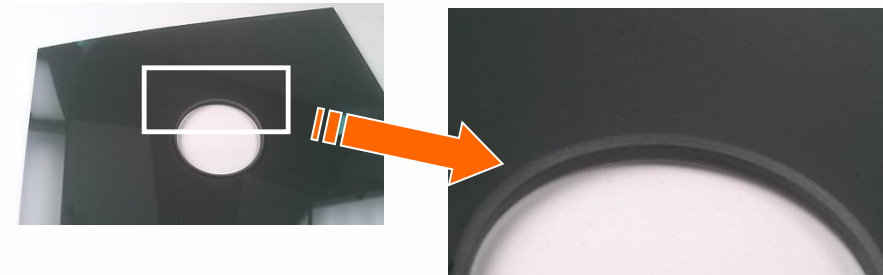
4. Core Drill / Seamers For Glass.

APPLICATION

Used for Seaming or chamfering edges provide aesthetically pleasing holes and will usually give higher furnace yields on tempered glass.



SHAPE OF WHEEL



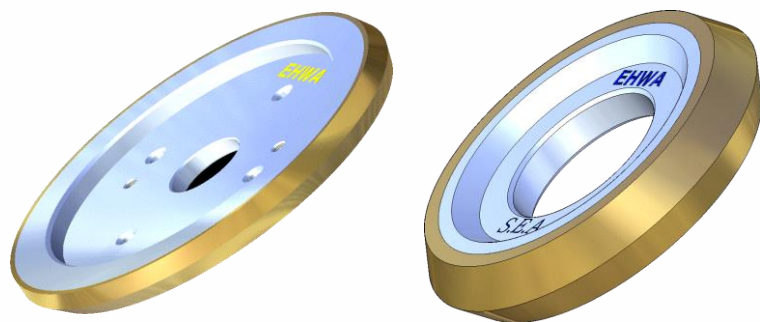
WORKPIECE(GLASS)

TYPE	APPLICATION	DIAMETER	GRIT SIZE	BOND
MD-6F2	CORE DRILL	$\phi 20 \sim \phi 50$	#120~#200	MC, MN
MD-2FF2	SEAMER	$\phi 20 \sim \phi 50$	#170~#230	MN, MP

5. Crystal Grinding Wheel.

APPLICATION

Used for forming specific shape in CRYSTAL and GLASS.



SHAPE OF WHEEL



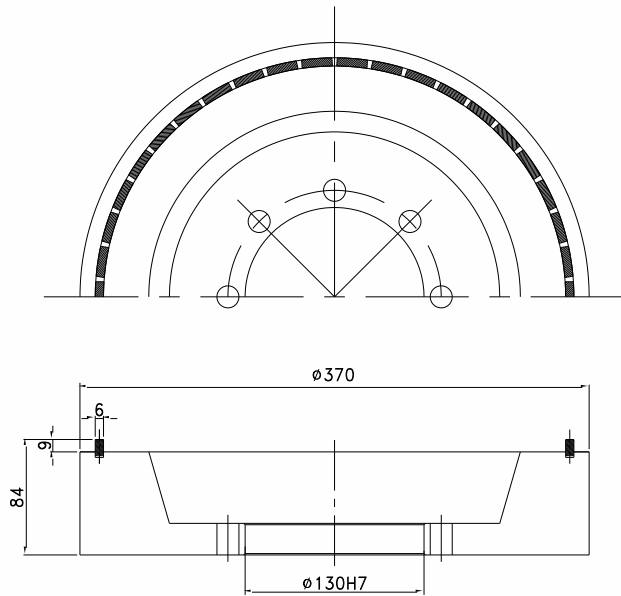
WORKPIECE(Crystal Glass)

TYPE	APPLICATION	DIAMETER	GRIT SIZE	BOND
MD-1EE1	FORMING SHAPE	$\phi 25 \sim \phi 200$	#230~#400	MF11
MD-14EE1				
MD-1FF1				
MD-14FF1				

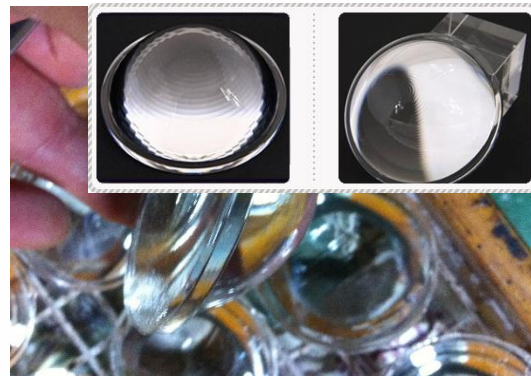
6. Grinding Wheel for Head Light Unit.

APPLICATION

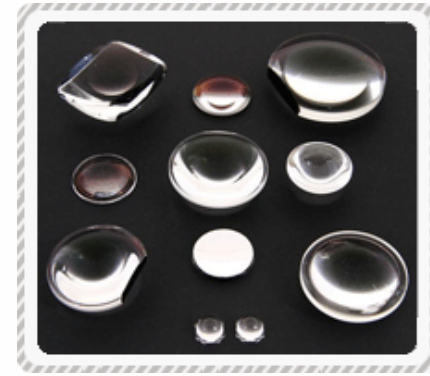
Used for forming specific shape in CRYSTAL and GLASS.



SHAPE OF WHEEL



Automobile Head light Unit



Projector image unit

WORKPIECE(Crystal Glass)



After
Rough



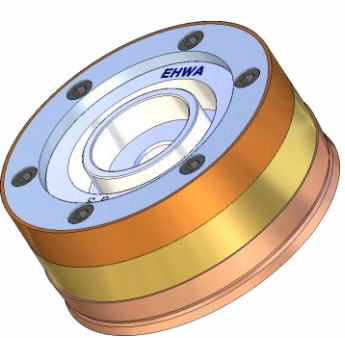
After
Finish

TYPE	APPLICATION	DIAMETER	GRIT SIZE	BOND
MD-6A2	ROUGH GRINDING	$\phi 350 \sim \phi 400$	#60~#80	MX32

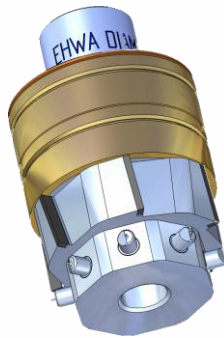
7. Eyeglass Grinding Wheel.

APPLICATION

Used for grinding and shape forming of eyeglass edge



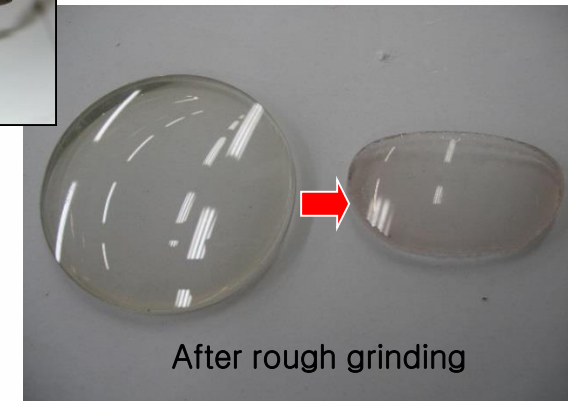
1A1+1A1+1EE6Y+1EE6Y



1A1+1EE6Y+1EE6Y



1A1+1A1+1EE6Y



After rough grinding

SHAPE OF WHEEL

WORKPIECE(Crystal Glass)

TYPE	APPLICATION	DIAMETER	GRIT SIZE	BOND
MD-1A1 or BSL	ROUGH GRINDING	$\phi 100 \sim \phi 150$	#60~#80	MP
MD-1EE1	FINISHING	$\phi 60 \sim \phi 150$	#325~#600	MF11, MS1, ME12
MD-1EE1	POLISHING	$\phi 20 \sim \phi 150$	#2000~#3000	ME9, MX84

8. PELLET & BULLET for Lens Grinding.

APPLICATION

Used for grinding and shape forming of optical lens.



SHAPE OF WHEEL



WORKPIECE(Optical Lens)

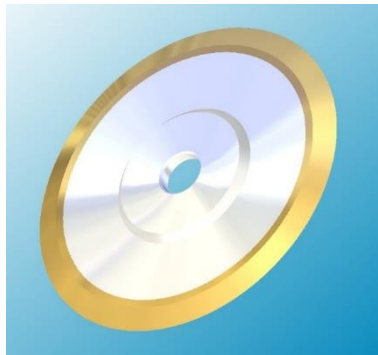
TYPE	APPLICATION	DIAMETER	GRIT SIZE	BOND
MD-PEL RD-PEL	OPTICAL LENS	$\phi 6 \sim \phi 30$	#800~#2000	MB21C, MP5 BCB
MD-BUL RD-BUL	OPTICAL LENS	$\phi 6 \sim \phi 30$	#800~#2000	MB21C, MP5 BCB

9. Saw Sharpening Grinding Wheel.

APPLICATION

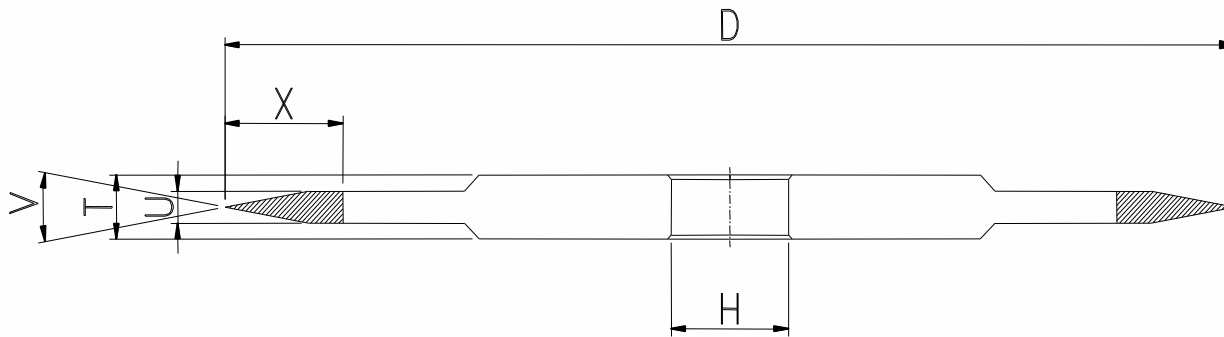
Used for grinding and shape forming of saw.

Wheel availability includes angles of diamond section in the range of 17 ~ 45 degree as below.



SHAPE OF WHEEL

WORKPIECE(Optical Lens)

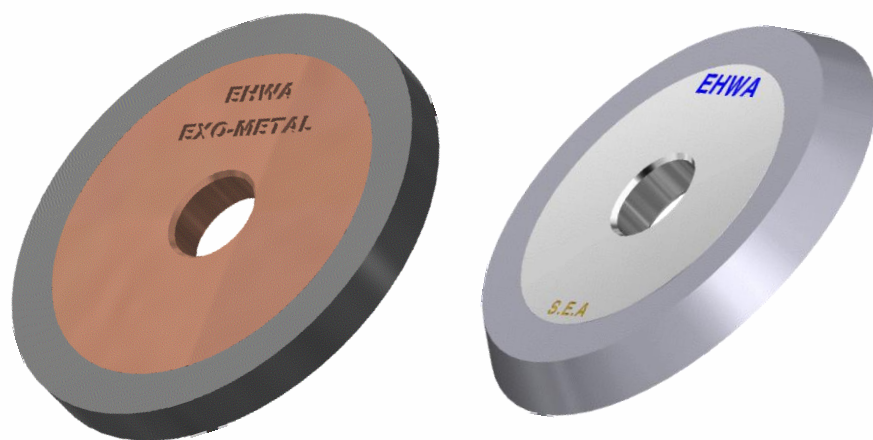


TYPE	DIAMETER	V	GRIT SIZE	BOND
MB-14EE1	$\phi 150 \sim \phi 200$	17V ~ 45V	#120~#2000	MP1, ME2

10. Flute Grinding Wheel.

APPLICATION

Used for grinding and shape forming of TC-ENDMILL & MICRO-DRILL, etc.



SHAPE OF WHEEL



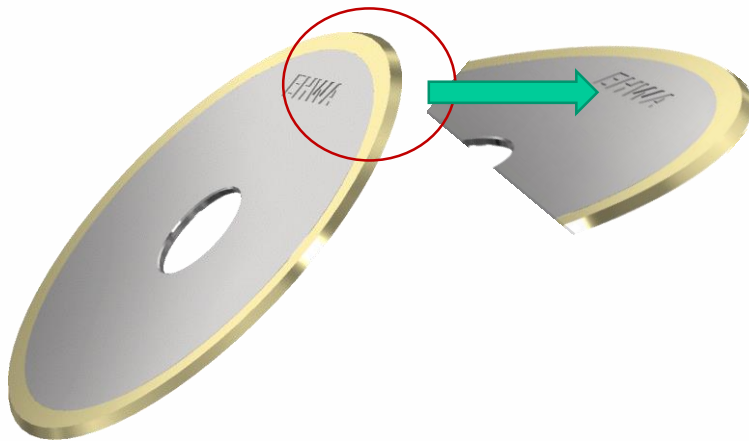
WORKPIECE(end mill, Drill)

TYPE	DIAMETER	V	GRIT SIZE	BOND
1A1 1V1	$\phi 100 \sim \phi 200$	7V \sim 20V	#200 \sim #400	MFS, MX4

12. Grinding Wheel for Carbide Rotary Burr

APPLICATION

Used for grinding and shape forming of TC Rotary Burr.



SHAPE OF WHEEL



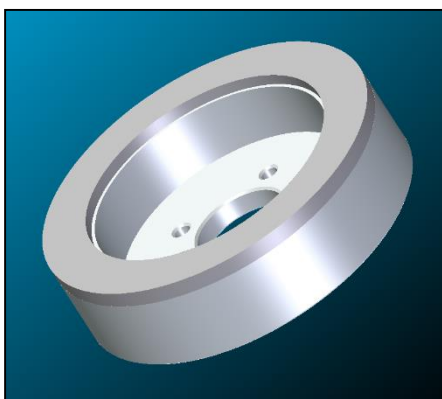
WORKPIECE
(Carbide Rotary Burr)

TYPE	DIAMETER	V	GRIT SIZE	BOND
MD-1V1	φ152	25V	#270	ME4
	φ130	30V ~ 60V	#60	MA

13. PCD & PCBN Grinding Wheel.

APPLICATION

*Used for grinding and chamfering PCD & PCBN bite and insert edge .
(Machine type is EWAG RS SERIES, etc.)*



SHAPE OF WHEEL



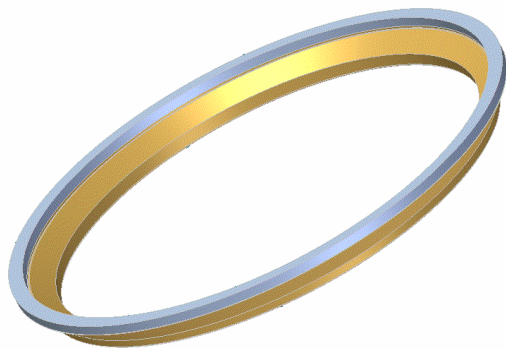
WORKPIECE(PCD & PCBN Bite)

TYPE	APPLICATION	DIAMETER	GRIT SIZE	BOND
MD-6A2	Edge Grinding (Rough)	$\phi 150$	#325	
	Edge Grinding (Semi Finish)		#600 ~ #800	MX4
	Edge Grinding (Finishing)		#1500	MA

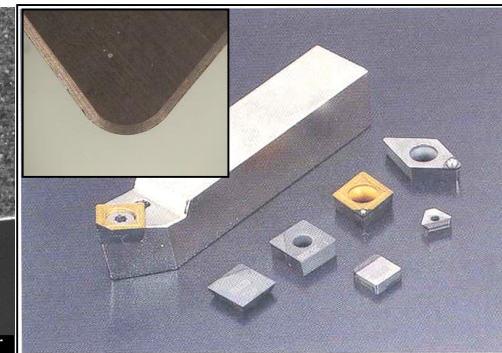
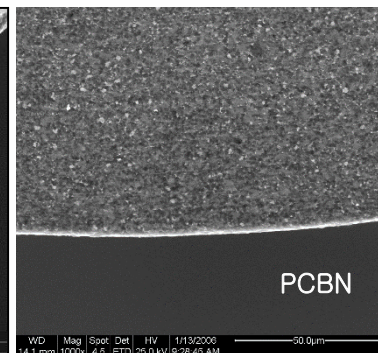
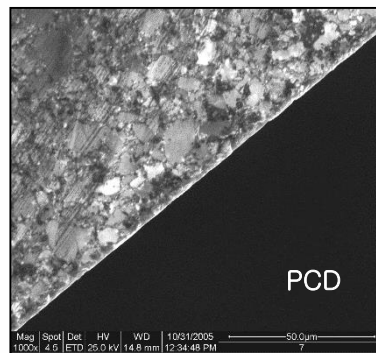
14. Insert Grinding Wheel.

APPLICATION

Used for grinding and chamfering PCD & PCBN , WC, Cermet insert edge.



SHAPE OF WHEEL



WORKPIECE

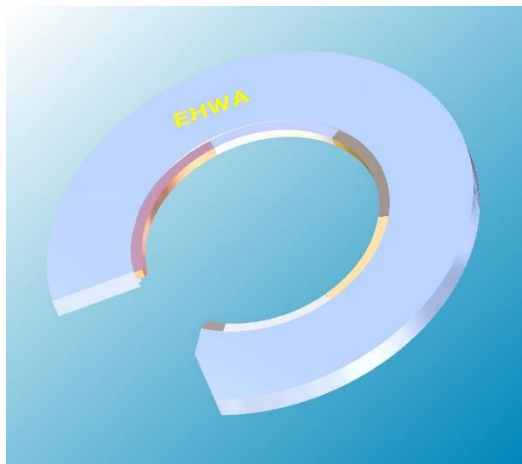
(PCD&PCBN, WC, CERMET Insert)

TYPE	APPLICATION	DIAMETER	GRIT SIZE	BOND
MD-12A2	Insert (PCD, PCBN, WC, CERMET)	$\phi 350 \sim \phi 400$	#600~#800	MX4
			#1000~#1200	MX4, MFS
			#1500~#2000	MX2, MFS

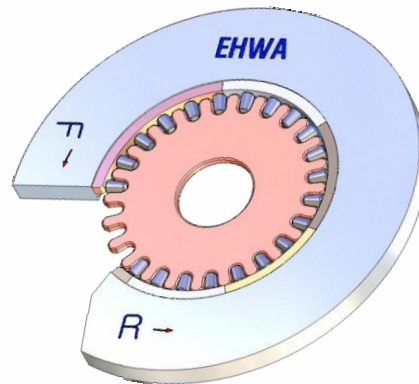
15. Horse Shoe Grinding Wheel For Bearing.

APPLICATION

Used for grinding surface grinding and grooving of ceramics materials.



SHAPE OF WHEEL



WORKPIECE (Roller Bearing)

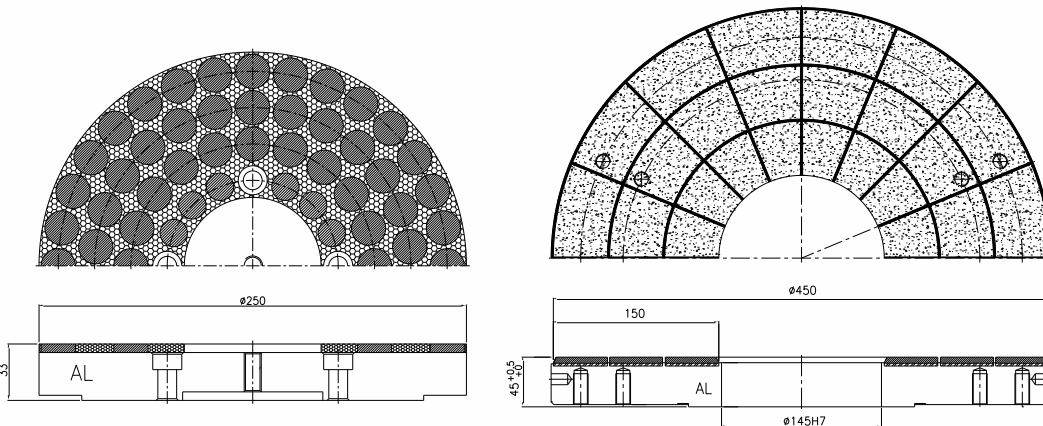


TYPE	DIAMETER	T	GRIT SIZE	BOND
MB-6A2	$\phi 100 \sim \phi 620$	2.5 ~ 10T	#60 ~ #3000	MB21, MF

16. Grinding W/L for Side Plate of Power Steering Pump.

APPLICATION

Used for grinding surface grinding of power steering oil pump. (FC250)



PELLET TYPE (250D)

SLOT TYPE (450D)

SHAPE OF WHEEL



WORKPIECE

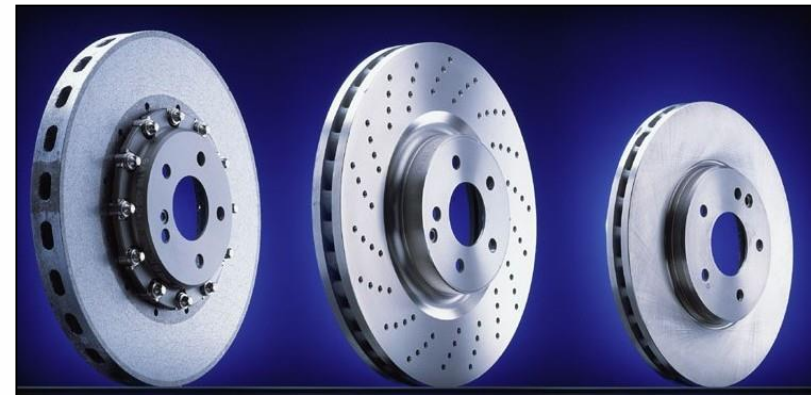
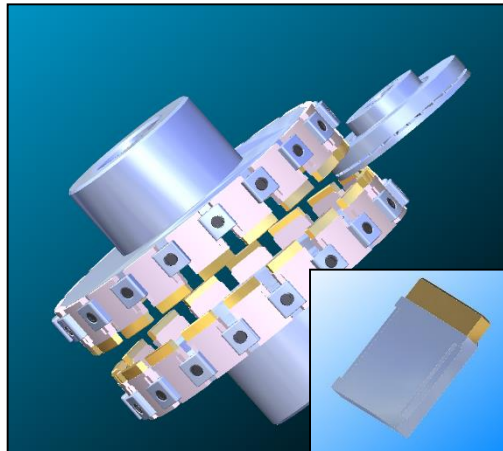
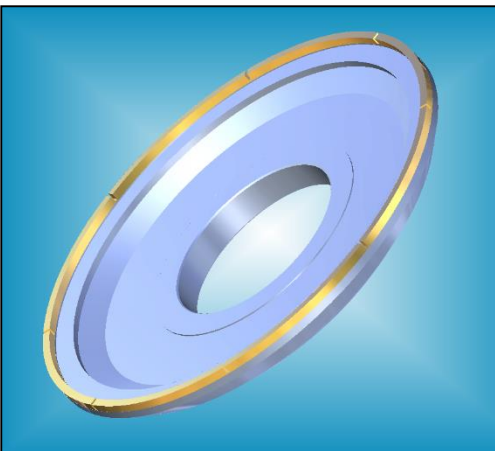
(Side Plate of Power Steering Oil Pump)

TYPE	DIAMETER	W	GRIT SIZE	BOND
MB-6A2	$\phi 450$	100 ~ 150w	#400 ~ #1000	MB21, MA
MB-6A2C	$\phi 250$ (PEL)	60 ~ 80W	#400 ~ #1000	MB21, MF

17. Grinding Wheel For Brake Disc.

APPLICATION

Used in Double Grinding Machine to grind automobile & bike brake disc.



SHAPE OF WHEEL

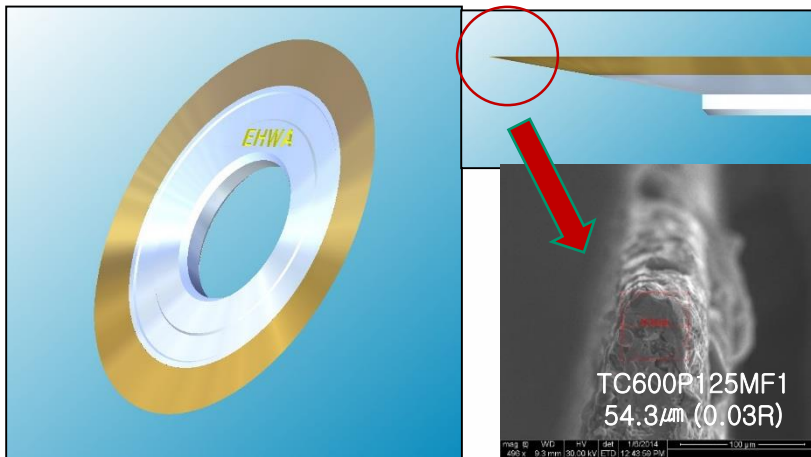
WORKPIECE (Brake Disc)

TYPE	DIAMETER	W	GRIT SIZE	BOND
MB-12A2	$\Phi 300 \sim \Phi 320$	3 ~ 6w	#80 ~ #140	MG, ME16, MH15
MB-6A2				
MB-HMF	18L-69.8W-118T		#140 ~ #200	MH17C, MP1, MP3

18. Profile Grinding Wheel.

APPLICATION

Used for grinding and precision forming of WC, HSS.



SHAPE OF WHEEL



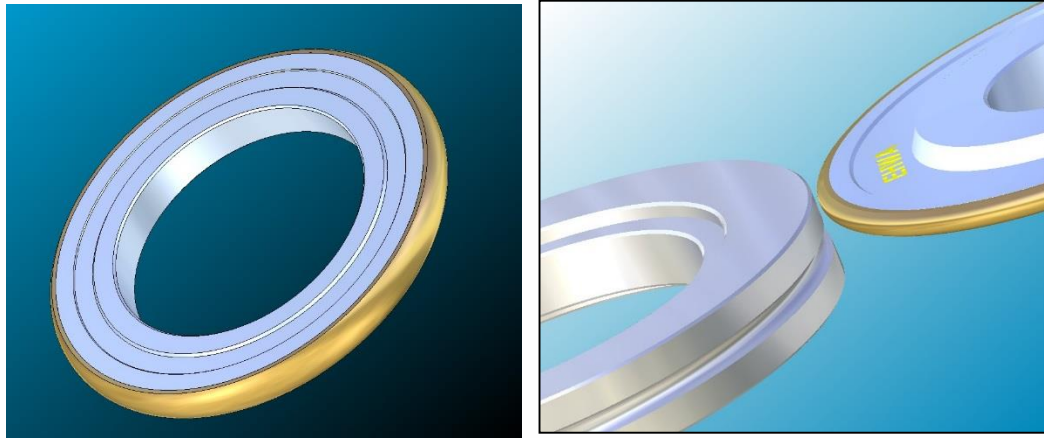
WORKPIECE(Precision Mold)

TYPE	DIAMETER	V	GRIT SIZE	BOND
4B2 4M1	φ 65 ~ φ 200	7V ~ 20V	#170~#1000	MP3, MF11

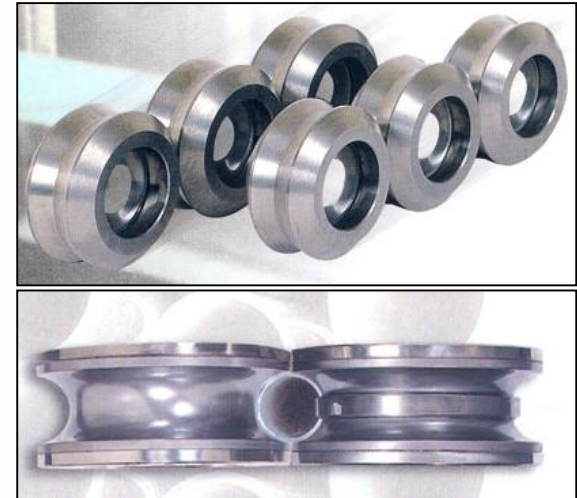
19. Grinding Wheel For TC Roll.

APPLICATION

Used for grinding and forming specific shape in tungsten carbide roll



SHAPE OF WHEEL



WORKPIECE (Tungsten Carbide Roll)

TYPE	DIAMETER	R	GRIT SIZE	BOND
MD-1FF1	$\phi 200 \sim \phi 250$	Various	#120~#140	MB2, MA
MD-14FF1	$\phi 200 \sim \phi 250$	Various	#120~#140	MB2, MA

20. Grinding Wheel For Ceramics.

APPLICATION

Used for grinding surface grinding and grooving of ceramics materials.



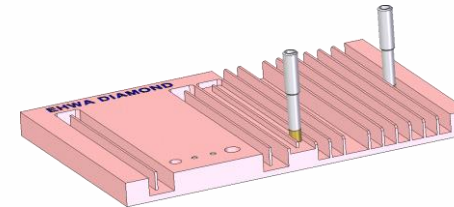
SHAPE OF WHEEL



Semicon Parts



LCD Parts



WORKPIECE (Ceramics)

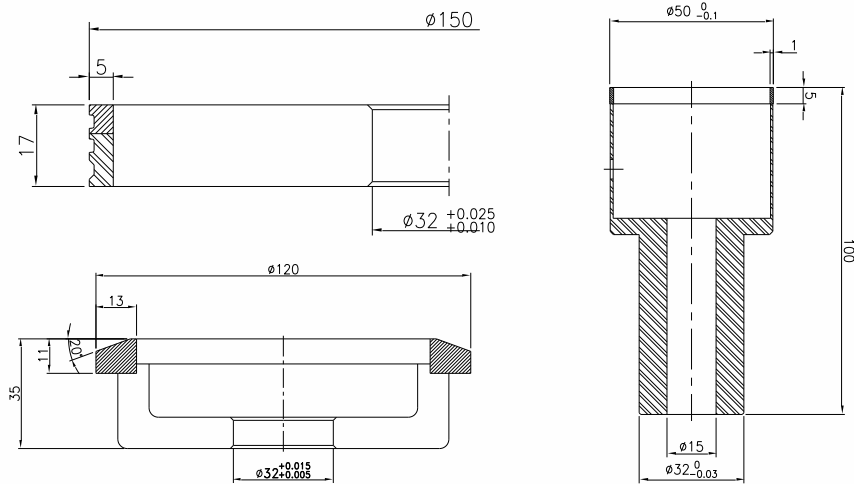


TYPE	DIAMETER	T	GRIT SIZE	BOND
MD-1A1	$\phi 175 \sim \phi 405$	4 ~ 40V	#120~#200	MA, MS
MD-DW	$\phi 4 \sim \phi 10$		#60~#200	MW4

21. Grinding Wheel For Quzrtz.

APPLICATION

Used for grinding surface grinding and grooving of quartz materials.



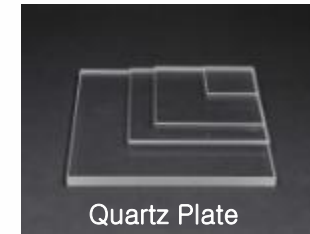
SHAPE OF WHEEL



Opaque Quartz



Quartz Disk



Quartz Plate

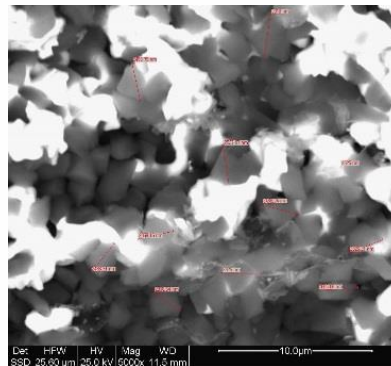
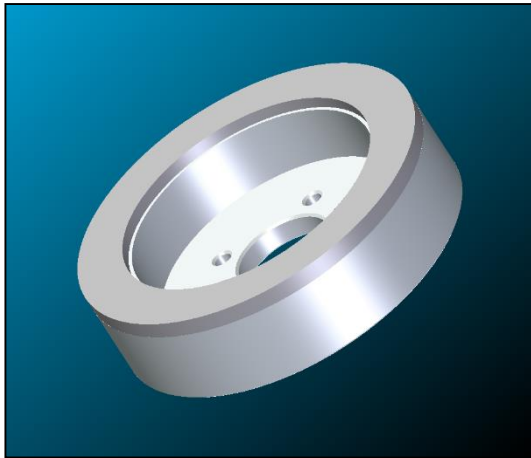
WORKPIECE (Quartz)

TYPE	DIAMETER	T	GRIT SIZE	BOND
MD-1A1 MD-3A1	$\phi 120 \sim \phi 180$	10 ~ 20	#120~#170	MA
MD-1FF6Y	$\phi 150$	10 ~ 20	#400~#800	MB23
MD-11C9	$\phi 80 \sim \phi 100$	30 ~ 40	#120~#170	MA
MD-6F2	$\phi 4 \sim \phi 50$		#60~#100	MW2

22. Super Polishing Wheel.

APPLICATION

Used for Polishing of mono crystal, PCD.



#5000 (1~2 μ m)
#10000 (0.25~0.75 μ m)

SHAPE OF WHEEL



WORKPIECE (Ceramics)

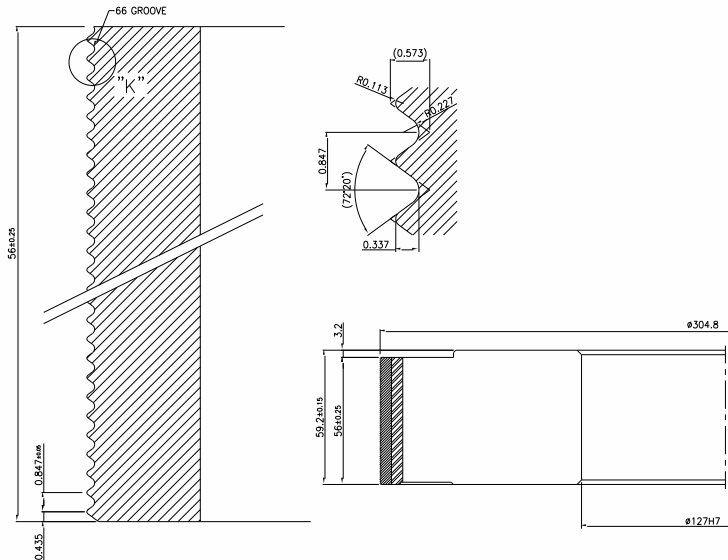
Grit Size	Surface Finish (Ra. : nm)
#8000	74
#5000	94

TYPE	DIAMETER	DIAMETER	GRIT SIZE	BOND
MD-6A2 MD-11A2 MD-12V2 MD-1A1	Single Crystal	$\phi 100 \sim \phi 230$	#1700~#5000	SPM1

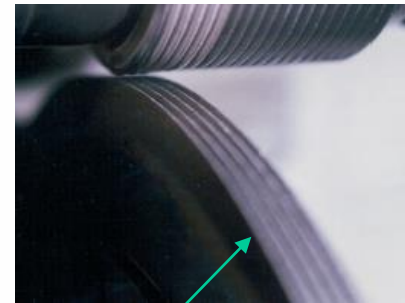
23. Crushing Wheel.

APPLICATION

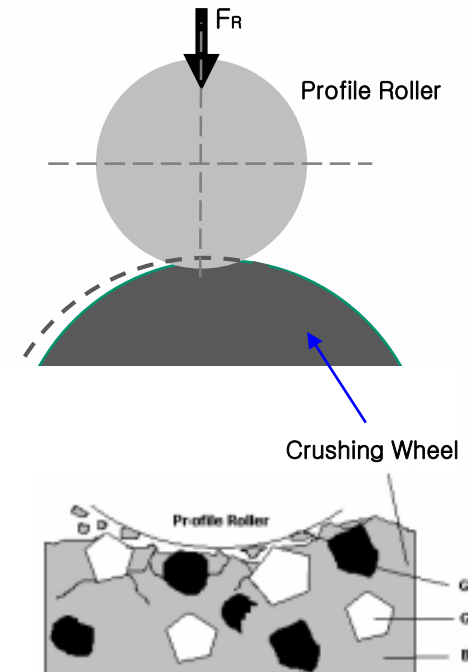
Used for forming specific shape in metal dresser by tungsten carbide roll.



SHAPE OF WHEEL



Metal crushing wheel



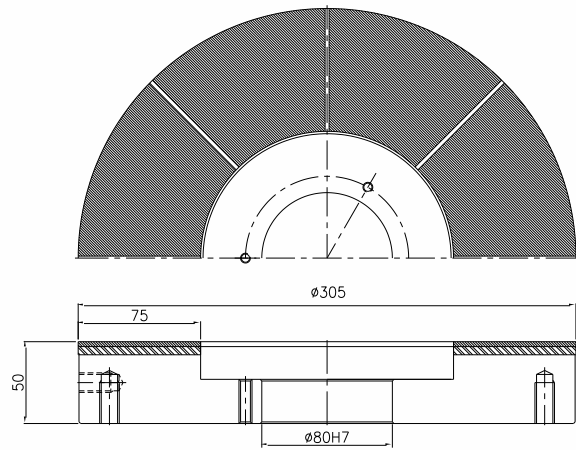
WORKPIECE (Ceramics)

TYPE	DIAMETER	T	GRIT SIZE	BOND
MD-1A1	φ 305	60	#230~#325	CRM1
MD-1A1	φ 200	18	#200~#270	CRM2

24. E.C.G (Electro-Chemical Grinding)

APPLICATION

Used for special grinding without burr.

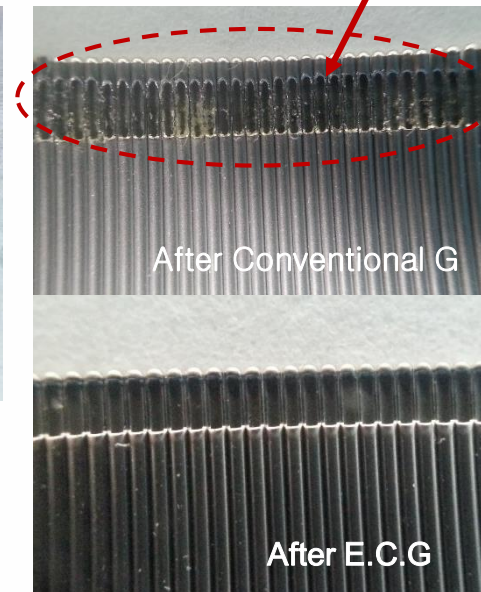


MD-6A2, 305D (Double Grinding)

SHAPE OF WHEEL



MD-1A1, 204D



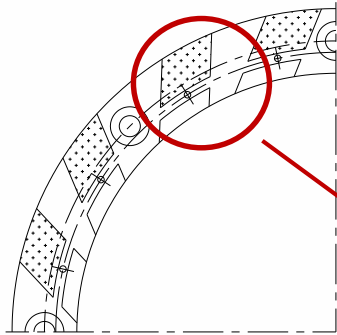
WORKPIECE (SUS Needle)

TYPE	DIAMETER	T	GRIT SIZE	BOND
MD-1A1	φ 204	1.5 ~ 6.0	#220	MEL 2.2
MD-6A2	φ 305	50	#600 ~ #800	MEL 3.0

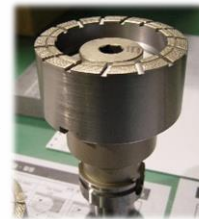
25. BSL (For Upper Plate of Cylinder Block)

APPLICATION

Used for special grinding Cylinder Block.



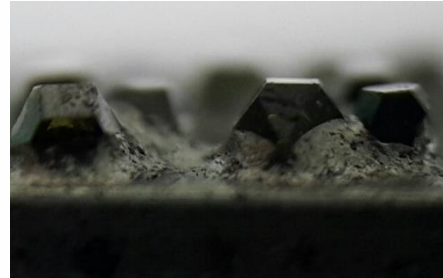
milling



grinding

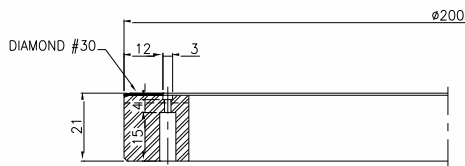


WORKPIECE (Cylinder Block)



Surface of Wheel

SHAPE OF WHEEL

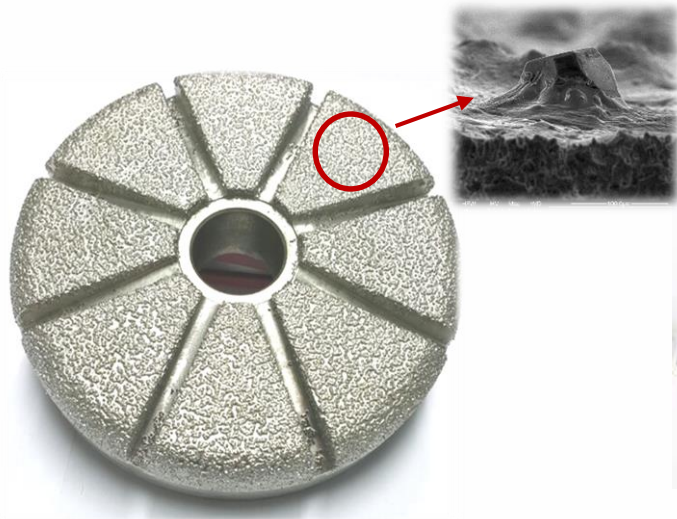


TYPE	DIAMETER	T	GRIT SIZE	BOND
MD-6A2	φ 200	20 ~ 50	#30 ~ #50	BSL

26. BSL (For Brake Disc Pad)

APPLICATION

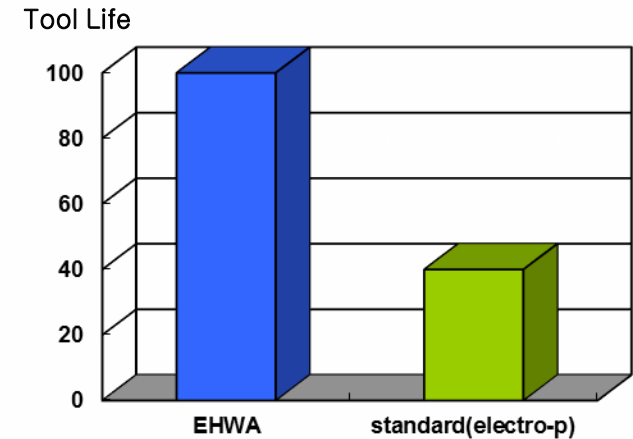
Used for special grinding without burr.



SHAPE OF WHEEL



WORKPIECE (Brake Disc Pad)



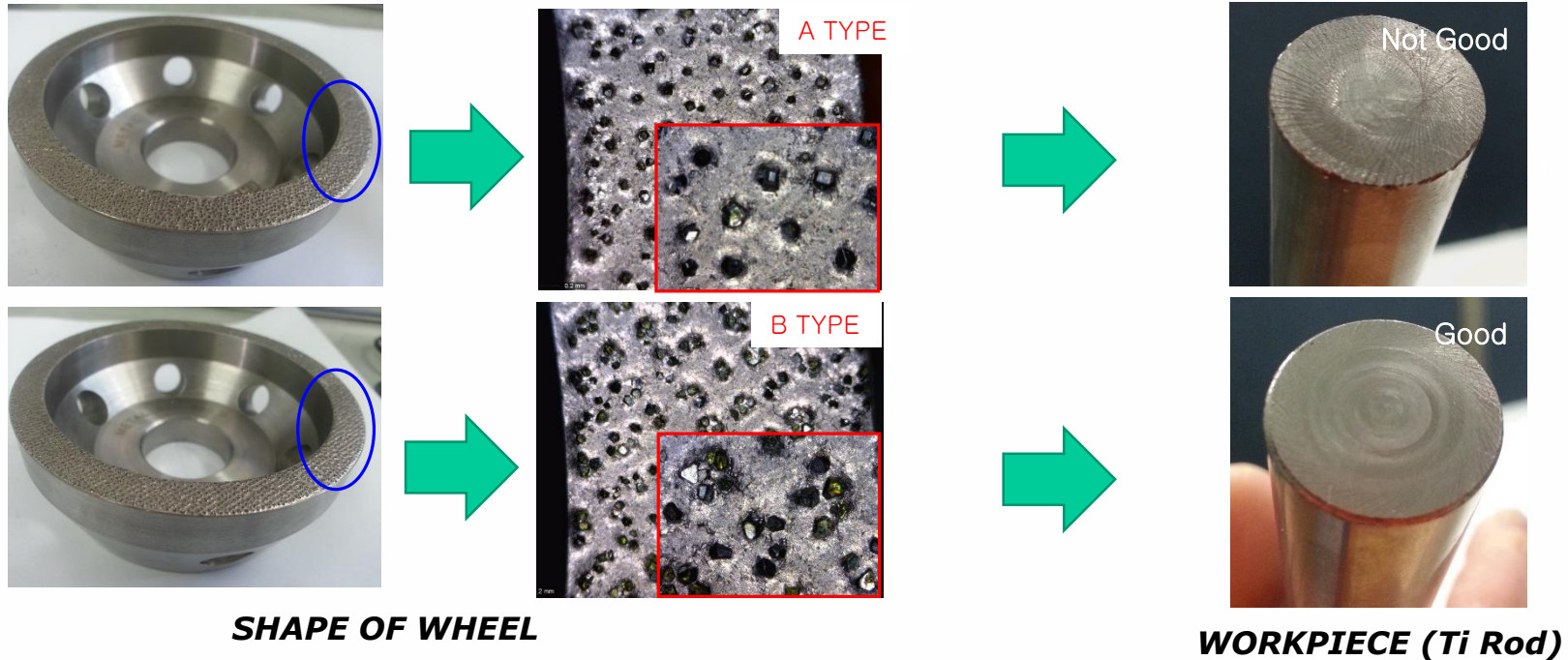
Test Result

TYPE	DIAMETER	T	GRIT SIZE	BOND
MD-6A2	φ150	30	#30~#50	BSL

27. BSL (For Ti materials)

APPLICATION

Used for special grinding Ti-Rod (Difficult cutting materials).



TYPE	DIAMETER	T	GRIT SIZE	BOND
MD-11A2	φ 80	30	#60	BSL